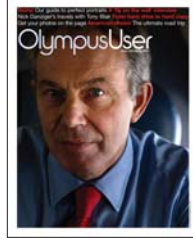
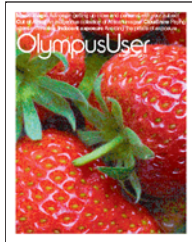


Subscribe to *Olympus User*

# SAVE 50%

ON YOUR FIRST YEAR'S SUBSCRIPTION



Pay just **£12.50** in your first year. Future years' subscription will be charged at the standard annual rate, this is currently **£24.99** a year, which includes four issues of *Olympus User*.



*Olympus User* shows you how to get the best from *your* camera:

- Four issues a year
- Practical advice written by Olympus experts
- Discounts and special offers on selected Olympus products
- Step-by-step 'how-to' features
- A chance to get your photos published
- Competitions with great prizes
- Your questions answered
- News from Olympus and innovations from around the globe
- Free advertisements to sell your second-hand Olympus equipment
- Really useful picture editing tips for everyone – whatever your experience!

In case of query please contact the Olympus Camera Club by email at [membership@olympuscameraclub.co.uk](mailto:membership@olympuscameraclub.co.uk), or by phone on 01952 214040



### This guarantee should be retained by the Payer. The Direct Debit Guarantee

- This Guarantee is offered by all Banks and Building Societies that take part in the Direct Debit Scheme. The efficiency and security of the Scheme is monitored and protected by your own Bank or Building Society.
- If the amounts to be paid or the payment dates change, Olympus UK Ltd will notify you 10 working days in advance of your account being debited or as otherwise agreed.
- If an error is made by Olympus UK Ltd or your Bank or Building Society, you are guaranteed a full and immediate refund from your branch of the amount paid.
- You can cancel a Direct Debit at any time by writing to your Bank or Building Society. Please also send a copy of your letter to us.

I wish to subscribe to *Olympus User* at the special introductory price of just **£12.50** in the first year\*. Please send me the current issue free and four further issues of *Olympus User* for £12.50 – I enclose my details below and overleaf for my payment by direct debit.

\*Future years' subscription will be charged at the standard annual rate, this is currently £24.99 a year, which includes four issues of *Olympus User*. *Olympus User* is published as part of the Olympus Camera Club.



OU/6/07

For methods of payment other than Direct Debit and for the cost of membership outside of the UK, please email [membership@olympuscameraclub.co.uk](mailto:membership@olympuscameraclub.co.uk) or telephone 01952 214040 for details. The Save 50% offer may not apply.

The camera I own is a \_\_\_\_\_ (model)

The Olympus Camera Club would like, on occasion, to contact you separately with information or special offers. Would you prefer to receive these by

Mr/Mrs/Ms \_\_\_\_\_ First name \_\_\_\_\_

Email  Post  Phone  SMS  Not at all

Surname \_\_\_\_\_

Address \_\_\_\_\_

Postcode \_\_\_\_\_

Email \_\_\_\_\_

Tel \_\_\_\_\_

Mobile \_\_\_\_\_

Please cut along the broken line and put this half in an envelope and return to:  
**FREEPOST RLSS-GYHT-EGJZ**  
Olympus Camera Club,  
PO Box 87,  
Oakengates TF3 3WT



### Instructions to your Bank or Building Society to pay by Direct Debit



Please fill in the whole form using a ball point pen and send to:  
FREEPOST RLSS-GYHT-EGJZ, Olympus Camera Club, PO Box 87, Oakengates TF3 3WT

#### Name and full postal address of your Bank or Building Society

To: The Manager \_\_\_\_\_ Bank/Building Society

Address \_\_\_\_\_

Postcode \_\_\_\_\_

#### Name(s) of Account Holder(s)

\_\_\_\_\_

#### Bank/Building Society account number

\_\_\_\_\_

#### Branch Sort Code

\_\_\_\_\_

#### Originator's Identification Number

**4 1 9 8 2 8**

#### Reference (to be completed by Olympus UK Ltd)

\_\_\_\_\_

**FOR OLYMPUS UK LTD OFFICIAL USE ONLY**  
This is not part of the instruction to your Bank or Building Society.

#### Instruction to your Bank or Building Society

Please pay Olympus UK Ltd Direct Debits from the account detailed in this instruction subject to the safeguards assured by the Direct Debit Guarantee. I understand that this instruction may remain with Olympus UK Ltd and, if so, details will be passed electronically to my Bank/Building Society.

Signature(s) \_\_\_\_\_

Date \_\_\_\_\_

Banks and Building Societies may not accept Direct Debit Instructions for some types of account