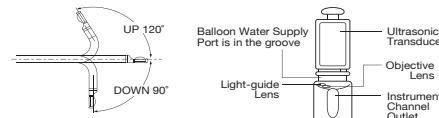
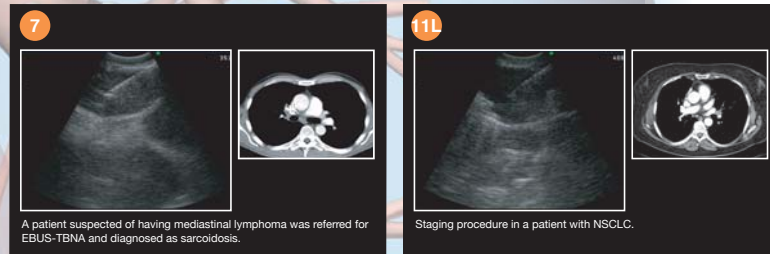
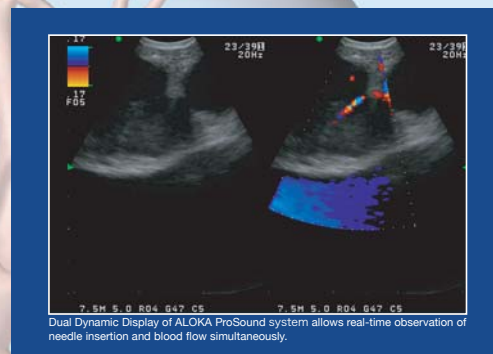
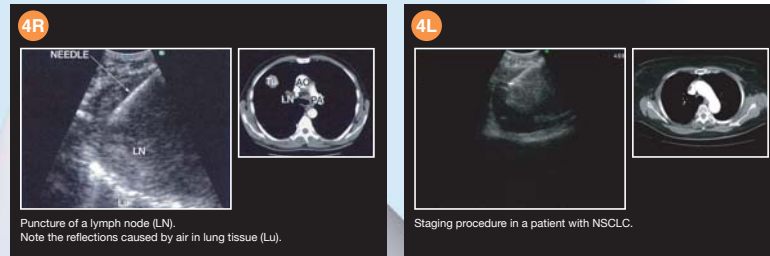


Clinical cases

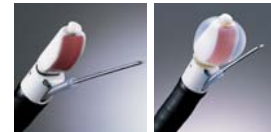


BF-UC260FW Specifications

Model		BF-UC260FW		
Optical system	Field of view	80 degree		
	Direction of view	35 degree forward oblique		
	Depth of field	2 to 50 mm		
	Insertion tube	Distal end outer diameter	6.9 mm	
		Insertion tube outer diameter	6.3 mm	
		Working length	600 mm	
Endoscopic functions	Channel inner diameter	2.2 mm		
	Instrument channel	Direction from which Endo-therapy accessories enter and exit the endoscopic image		
Bending section	Angulation range	UP 120, Down 90		
	Total length	890 mm		
Ultrasonic functions		With ALOKA ProSound α10	With OLYMPUS EU-ME1	
	Ultrasonic cable	MAJ-1597 (1,500 mm)		
Ultrasonic functions	Display mode	B-mode, M-mode, D-mode, Flow-mode, Powerflow-mode, eFLOW	B-mode, Color and Power Doppler in normal and high resolution Flow-mode	
	Scanning method	Electronic curved linear array		
	Scanning direction	Parallel to the insertion direction		
	Frequency	5 / 7.5 / 10 / 12 MHz	5 / 6 / 7.5 / 10 / 12 MHz	
	Tissue Harmonic Echo	5.00MP / 5.00MS / 5.00MR / 5.00MH	—	
	Scanning range	60 degree		
	Focusing Point	A maximum of 4 focal points are available.	A maximum of 2 focal points are available	
	Contacting method	Balloon method, Direct contact method		

NA-201SX-4021/4022 Specifications

Model	NA-201SX-4021	NA-201SX-4022
Maximum Insertion Portion Diameter	1.9 mm	1.8 mm
Working Length	700 mm	
Needle Width	21 G	22 G
Needle Length	40 mm	



Any product in our brochures that features this is part of the lineup of Olympus fine-needle aspiration biopsy product.

Specifications, design and accessories are subject to change without any notice or obligation on the part of the manufacturer.

OLYMPUS

OLYMPUS MEDICAL SYSTEMS CORP.
Shinjuku Monolith, 2-3-1 Nishi-Shinjuku, Shinjuku-ku, Tokyo 163-0914, Japan

For a complete listing of sales and distribution locations visit: www.olympus.com

OLYMPUS

Your Vision, Our Future

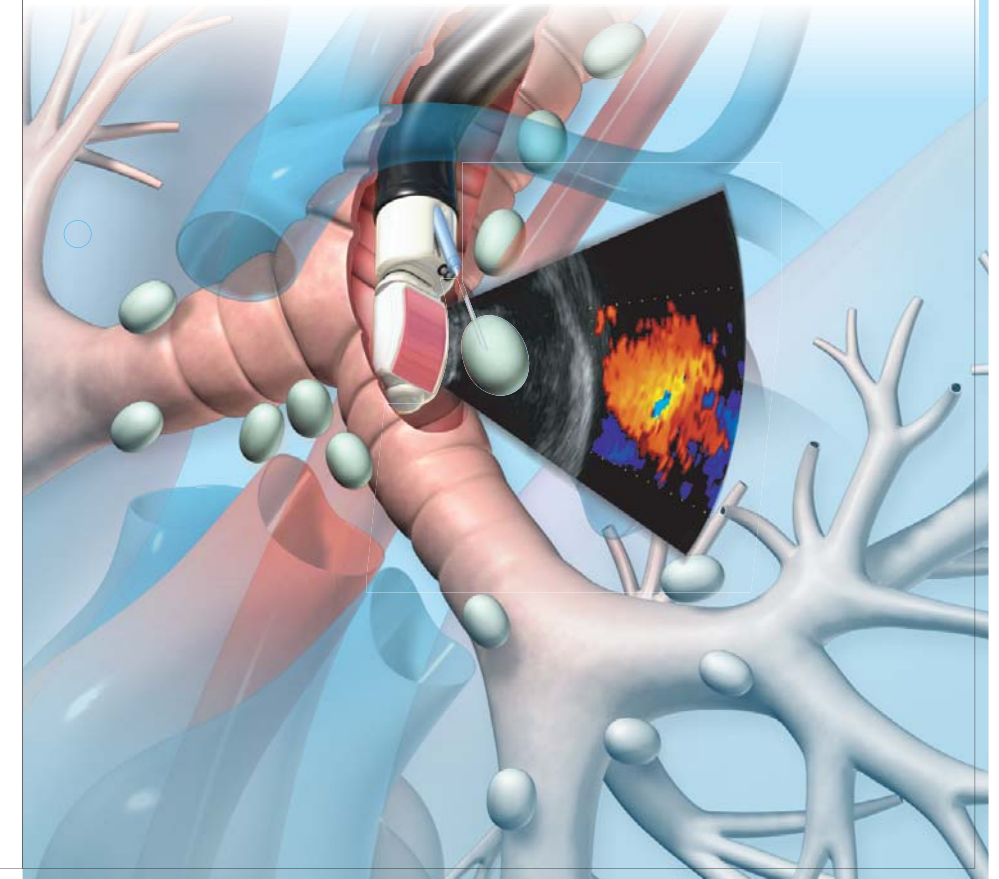
EVIS LUCERA

EVIS LUCERA ULTRASONIC BRONCHOFIBERVIDEOSCOPE
OLYMPUS BF TYPE UC260FW



EBUS-TBNA

Setting a new standard for diagnosis and staging in the lung



Innovative scope design helps you take advantage of superior ultrasound imaging for EBUS-TBNA.

Compatible with Olympus' popular EU-ME1 compact endoscopic ultrasound centre as well as ALOKA's industry-leading ProSound α10, this new EBUS-TBNA system makes biopsies safer and more accurate than conventional blind TBNA, and offers an alternative to mediastinoscopy.

The BF-UC260FW clearly visualizes the dedicated echogenic aspiration needle via ultrasound imaging.

With the introduction of this versatile EBUS-TBNA system, Olympus is making an important contribution to improved staging and diagnosis of lung cancer.

Wide 2.2 mm diameter channel and innovative detachable ultrasound cable

Features

- Channel diameter enlarged to 2.2 mm for improved suction capability and device insertion.
- Detachable ultrasonic cable design allows connection with the ALOKA ProSound α10, and Olympus EU-ME1 or EU-C2000.
- Wider ultrasound scanning and higher resolution ultrasound image, plus higher sensitivity Doppler function available with ProSound α10 and EU-ME1.
- Detachable ultrasonic cable simplifies reprocessing and facilitates easier placement into an automatic endoscope reprocessor.
- Innovative "hybrid" design combines video and fiberoptic technologies in a single scope, offering the same functionality as videoscopes yet with a slim insertion tube diameter of only 6.2 mm*, even with an incorporated ultrasound transducer.

*Distal tip diameter measures 6.9 mm.

EVIS LUCERA ULTRASONIC BRONCHOFIBERVIDEOSCOPE

OLYMPUS **BF** TYPE **UC260FW**

HYBRID
SCOPE

A choice of high-performance ultrasound processors



ALOKA DIAGNOSTIC
ULTRASOUND SYSTEM
ProSound α10

- eFLOW
- Tissue Harmonic Echo (THE)
- 4 ultrasound frequencies
- Color Doppler, Power Doppler and Spectral Doppler
- Dual Dynamic Display
- Compatible with ALOKA's extra-corporal probes
- DICOM compatible digital data output



OLYMPUS UNIVERSAL ENDOSCOPIC
ULTRASOUND CENTER
EU-ME1

- 5 ultrasound frequencies
- Color and Power Doppler in normal and high resolution flow mode
- Compatible with radial ultrasound miniature probes
- One keyboard to control ultrasound and endoscopic functions
- Built-in picture-in-picture function
- Digital data output
- Compact design to integrate into your endoscopy workstation



SINGLE USE ASPIRATION NEEDLE
NA-201SX-4021 (21 gauge)

NA-201SX-4022 (22 gauge)

Echogenic dimpled needle tip for improved visibility on ultrasound images

Features

- Specifically designed for use with Olympus EBUS-TBNA scopes
- 21 gauge and 22 gauge outer diameter options available
- Adjustable needle length
- Pre-sterilized and single-use



ViziShot