

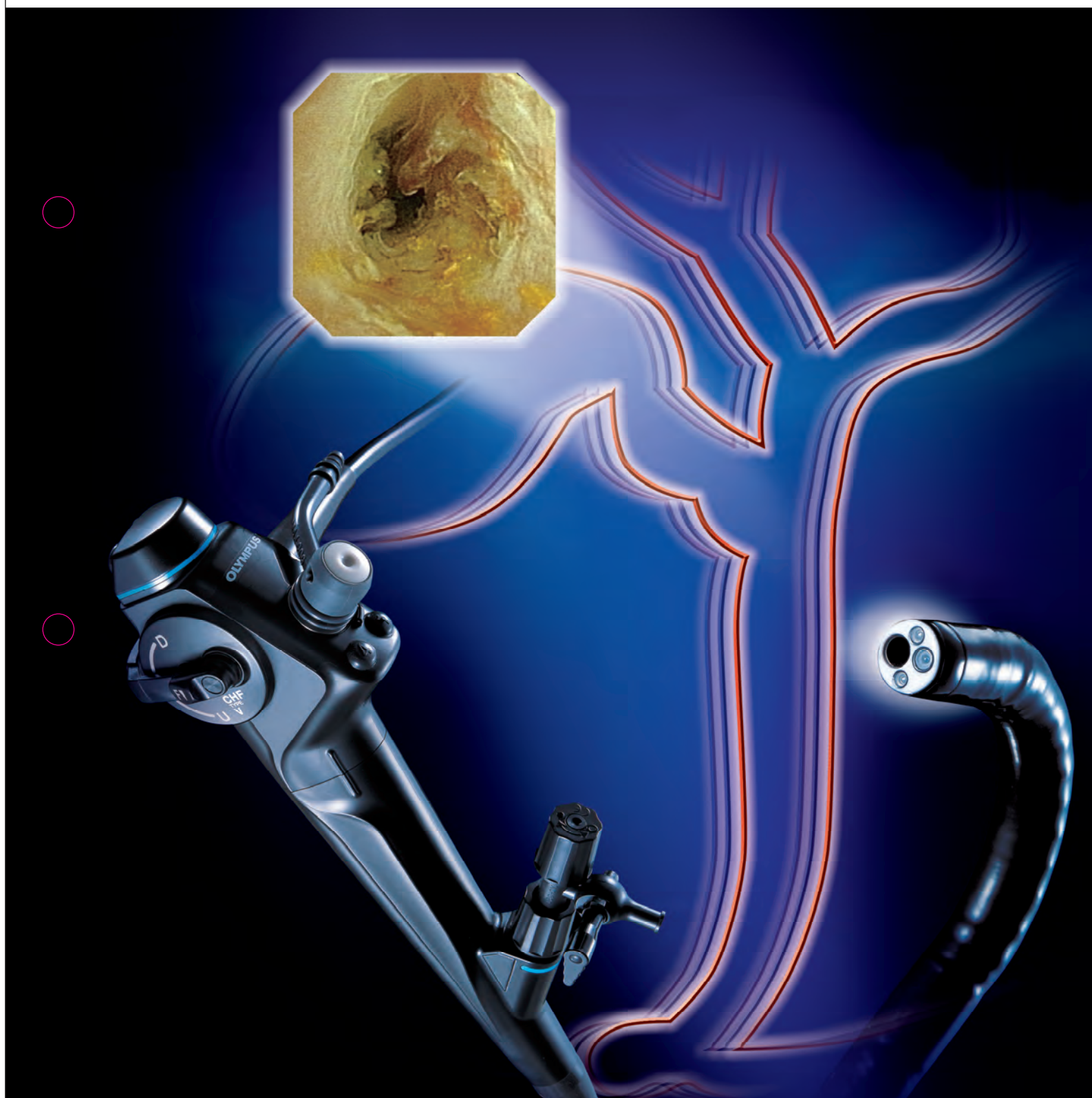
OLYMPUS[®]

Your Vision, Our Future

NEW CHOLEDOCHO-VIDEOSCOPE

OLYMPUS CHF TYPE V

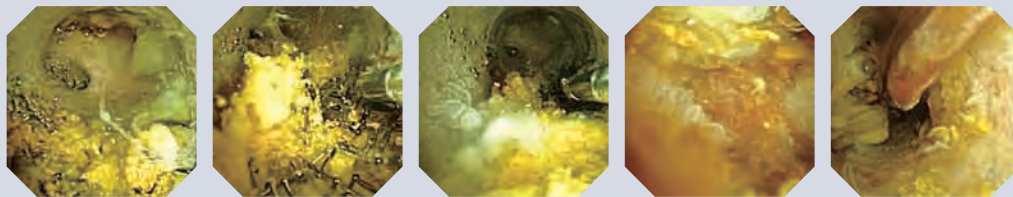
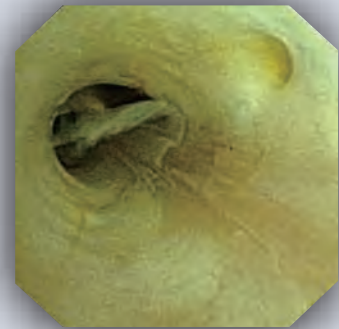
Visualize Precision — Olympus Brings It Closer



Brilliant Imaging Performance Brings A New Perspective To Endoscopy

CCD-on-the-tip for brilliantly visualized images

- A simultaneous-multicolor type CCD that features color consistent moiré-free imaging is introduced to the visualization of the bile duct.
- With its deep depth of field of view, this system eliminates the need for inconvenient intra-operative focusing.
- The CHF-V's image is even larger and less distorted than that of our conventional fiberscope*, making the most of its high-resolution image quality and enhancing observation.



*The OES choledochofiberscope CHF TYPE P60.



Standard Set

CHF-V	Choledochoscope	1
MAJ-891	Forceps/Irrigation Plug	1
MB-156	EOG cap	1
MAJ-1077	Suction Cleaning Adapter	1
MAJ-579	Biopsy Valve 10 pcs	1
MH-507	Channel-Opening Cleaning Brush	1
BW-15B	Channel Cleaning Brush	1
FB-19SX-1	Biopsy Forceps Fenestrated	2
FG-24SX-1	Grasping Forceps Basket Type	2
PW-7SX-1	Washing Pipe Retro-Jet	2
MAJ-207	Suction Valve 10 pcs	1

SPECIFICATIONS		
Optical System	Field of view	120° (Forward viewing)
	Depth of field	3-50 mm
Distal End	Outer diameter	4.9 mm
Bending Section	Angulation range	160° up, 130° down
Insertion Tube	Outer diameter	5.2 mm
Length	Working length	380 mm
	Total length	660 mm
Biopsy Forceps	Minimum visible distance	3 mm from distal end
Instrument Channel	Inner diameter	2.0 mm

Compatible Video Systems



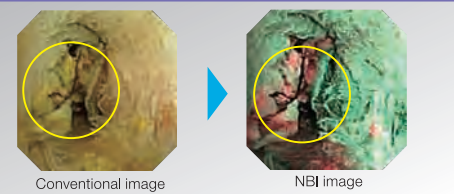
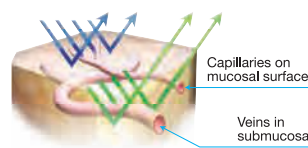
VISERA Video System

Accessories

BIOPSY FORCEPS				ROTATABLE BIOPSY FORCEPS	
	Fenestrated FB-19SX-1		Fenestrated with needle FB-34C-1		Fenestrated FB-21SX-1
	Fenestrated FB-19CR-1		Fenestrated FB-19CR-1		Fenestrated FB-19CR-1
GRASPING FORCEPS			WASHING PIPE		
	Rubber tips (non-latex) FG-20P-1		Fenestrated FG-24SX-1		Sharp tooth FG-53SX-1
	Back flushing PW-7SX-1		Back flushing PW-7SX-1		Back flushing PW-7SX-1

NBI Narrow Band Imaging for a more discerning view

Available in combination with EVIS EXERA II (CV-180 + CLV-180) or VISERA Pro (OTV-S7VPro + CLV-S40Pro).



Specifications, design and accessories are subject to change without any notice or obligation on the part of the manufacturer.

OLYMPUS

www.olympus.com

OLYMPUS MEDICAL SYSTEMS CORP.
Shinjuku Monolith, 3-1 Nishi-Shinjuku 2-chome, Shinjuku-ku, Tokyo 163-0914, Japan
OLYMPUS WINTER & IBE GMBH
Kuehnstrasse 61, 22045 Hamburg, Germany
OLYMPUS MEDICAL SYSTEMS EUROPA GMBH
Postfach 10 49 08, 20034 Hamburg / Wendenstrasse 14-18, 20097 Hamburg, Germany
OLYMPUS SURGICAL & INDUSTRIAL AMERICA INC.
One Corporate Drive, Orangeburg, New York 10962, U.S.A.
OLYMPUS LATIN AMERICA, INC.
5301 Blue Lagoon Drive, Suite 290 Miami, Florida 33126-2097, U.S.A.
OLYMPUS KEYMED GROUP LTD.
Keymed House, Stock Road, Southend-on-Sea, Essex SS2 5QH, England

OLYMPUS SINGAPORE PTE LTD.
491B River Valley Road #12-01/04, Valley Point Office Tower, Singapore 248373
OLYMPUS HONG KONG AND CHINA LIMITED
L43, Office Tower, Langham Place, 8 Argyle Street, Mongkok, Kowloon, Hong Kong
OLYMPUS (BEIJING) SALES & SERVICE CO., LTD.
Room, 1202, NCI Tower, A12 Jianguomenwai Avenue Chaoyang District Beijing, 100022, China
OLYMPUS MOSCOW LIMITED LIABILITY COMPANY
117071, Moscow, Malaya Kaluzhskaya 19, bld. 1, fl. 2, Russia
OLYMPUS AUSTRALIA PTY LTD
31 Gilby Road, Mount Waverley, VIC, 3149, Australia
OLYMPUS KOREA CO., LTD.
4F, 5F, Gyeongam Bldg., 157-27, Samsong-dong, Gangnam-ku, Seoul, Korea